



Colburn & Guyette

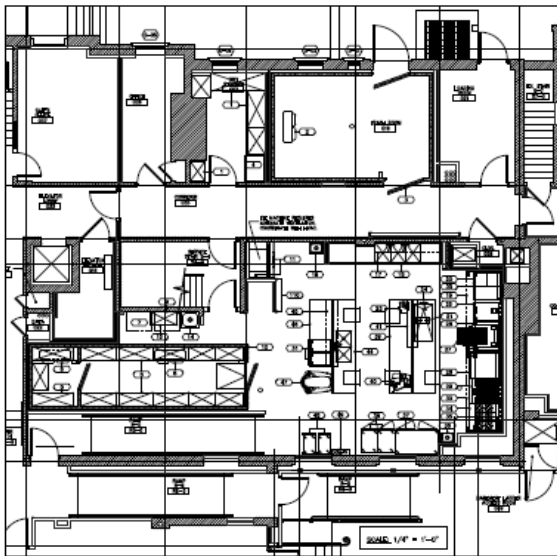
Foodservice Designers & Consultants

The Lord Jeffery Inn

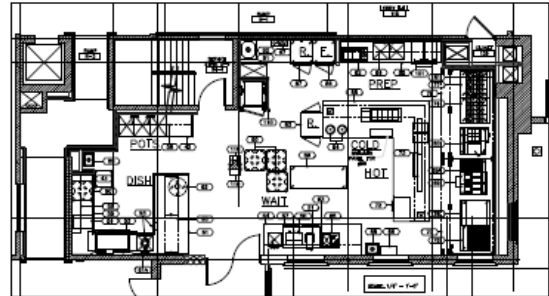
Amherst, MA

Estimated Completion 2012

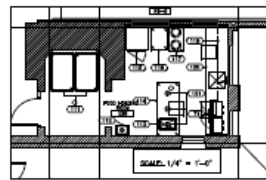
- Kitchen / Banquet / Staging – 3,000 sf.
- Estimated Equip. Cost - \$542,000
- Full programming and design services of two full service kitchens and a staging area.
- This new design is to support the newly renovated 2,360 square foot Ballroom and full service Restaurant.



GROUND FLOOR EQUIPMENT



FIRST FLOOR EQUIPMENT



PLATING AREA